

# BOATS

## *PROFESSIONAL USE*



**SEDRA MARINE**

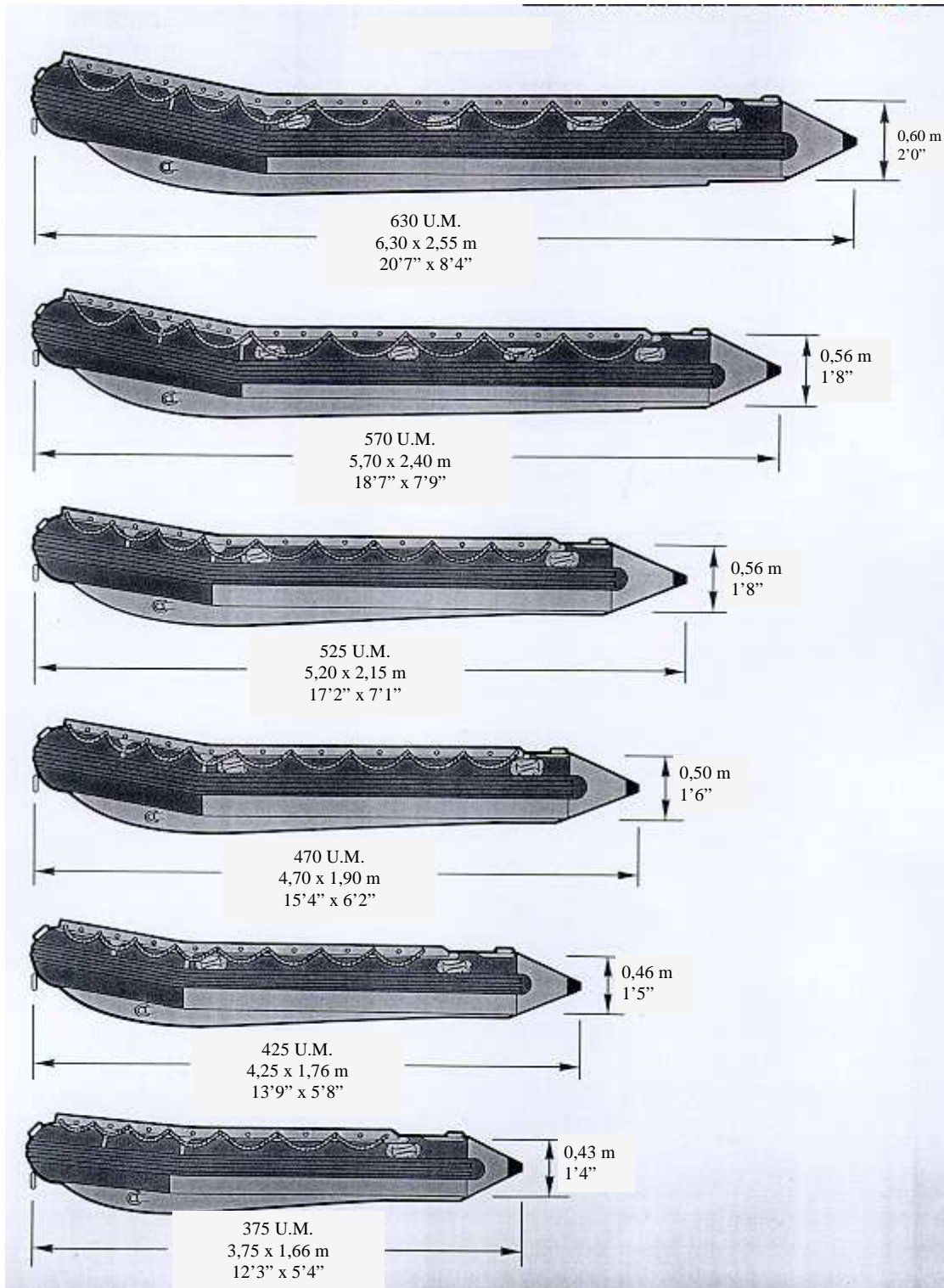
FRANCE

Tél. : + 33 (0) 5 62 28 32 52 - Fax : + 33 (0) 5 62 28 40 68  
e-mail : [info@sedra-marine.fr](mailto:info@sedra-marine.fr) - Site : <http://www.sedramarine-ard.com>



# BOATS

## The U.M. range



# BOATS

## The U.M range

Characteristics	375 UM	425 UM	470 UM	525 UM	570 UM	630 UM
Length (m)	3,80	4,25	4,70	5,25	5,70	6,30
Width (m)	1,76	1,76	1,90	2,15	2,40	2,55
Total weight (kg)	93	109	130	192	230	265
Maximum engine power (CV)	40	50	60	70	90	140 or 2 x 65
Loading capacity (men)	5/6	6/8	10	12/14	14/16	20/22
Payload (kg)	750	950	1250	1810	2060	2600
Speed (km/h)	45 with 20CV	40 with 20CV	55 with 50CV	50 with 40CV	45 with 70CV	55 with 115 CV
Standard equipment (large output inflator)	1	1	1	1	2	2
Repair kit	1	1	1	1	1	1
Tidy-pockets	1	1	1	1	2	2
Transportation bags	2	2	2	2	3	3
Automatic drain-hole	1	2	2	2	4	4
Towing-rings (and fastening-rings)	2	2	2	2	3 (2)	5 (2)
Transom plate	1	1	1	1	1 (settled for twin engine)	1 (settled for twin engine)
Outside moulded handle	4	4	6	6	8	8
Stainless front handle	1	1	1	1	1	1
Handling chain plate	3	3	3	3	3	3
Lift-line	2	2	2	2	2	2
Special reinforcement against abrasion under the chambers	Standard on every model					
Anti-chafing strakes - width (cm)	Standard on every model					
	16	16	16	16	16	24
Fuel tank bracket	1	1	1	1	4	4
Paddle	2	2	2	2	4	4
Manometer	1	1	1	1	1	1

### Colour :

All models of the U.M. range can be delivered in Army Green (NATO) (standard) - Matt black - Grey - Safety red (on request).

### Compartments :

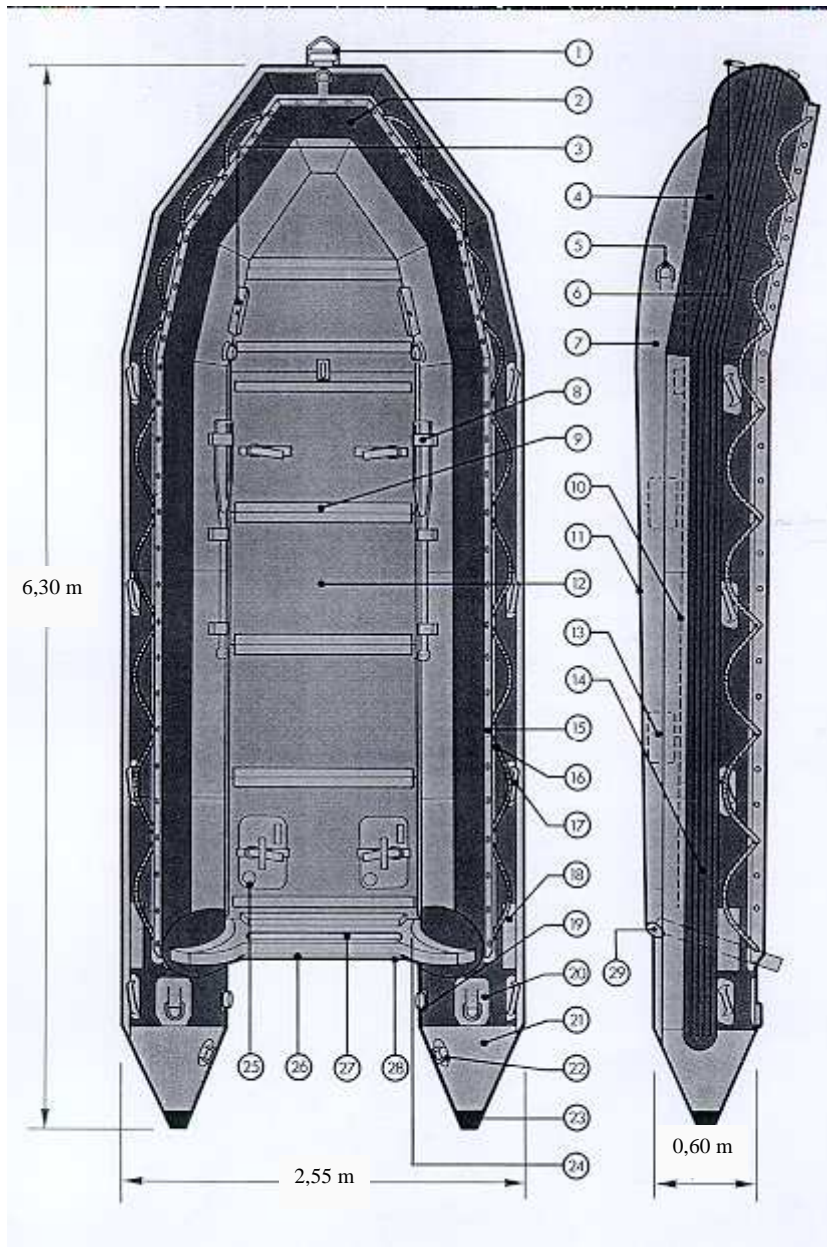
On request, we can increase the number of compartments on each model.

### Optional :

- Light alloy floorboard
- Inflatable keel

# BOATS

## The U.M. range



### 630 U.M. technical data

- 1- Bow carrying handle
- 2- Hull
- 3- Pocket
- 4- Forward lining
- 5- Mooring ring
- 6- Front handle
- 7- Bottom with protection strip
- 8- Paddle locks
- 9- Floor ties
- 10- 3-section wood keel
- 11- Under-float lining
- 12- Anti-skid coating
- 13- Rear keel section coupling
- 14- Anti-chaffing strips
- 15- Bolt rope
- 16- Hand rope
- 17- Side carrying handle
- 18- Sillinger label
- 19- Inflating valve
- 20- Rear tow rings
- 21- Rear cone reinforcement
- 22- Fabric-mounted ring
- 23- Rear cone cap
- 24- Transom
- 25- Tank bracket
- 26- Transom reinforcement
- 27- Transom plate
- 28- Reinforcement band
- 29- Drain-valve

# BOATS

## The U.M. range



### 630 U.M. - 570 U.M. - 525 U.M.

Their superb interior capacity allowing a large load, as well as their rapidity of intervention, make the 525, 570 and 630 U.M. the best units to fulfil military and professional requirements. All these models have a square stem for use as push boats.

Characteristics	630 UM	570 UM	525 UM
Full length	20'7"	18'7"	17'2"
Full width	8'4"	7'9"	7'1"
Compartments	5	5	5
Floats diameter	2'0"	1'8"	1'8"
Total weight	584 lbs	507 lbs	423 lbs
Maximum engine power	140 H.P. or 2 x 65 H.P.	100 H.P.	70 H.P.
Recommended engine power	115 H.P. or 2 x 50 H.P.	70 H.P. or 2 x 50 H.P.	40 H.P. to 50 H.P.
Capacity	22 men	14/16 men	12/14 men
Payload	5733 lbs	4542 lbs	3991 lbs

### SPECIFIC CHARACTERISTICS

- External lining of the nose with special fabric on the first third of the boat
- Bottom of the craft lined with three wide rubbing strakes
- Floor-boards covered with anti-skid material
- Reinforced transom
- 2 wood-sheathed metal stringers
- Transom fitted to hold twin or single engines
- Made with 1670 decitex heavy duty material incorporated with Hyphalon, cold vulcanization
- Colours : army green, grey, black
- conforms with AFNOR J 37825 specifications, controlled by VERITAS

# BOATS

## The U.M. range



### 470 U.M. - 425 U.M. - 380 U.M.

The 470, 425 and 380 U.M. have been designed as high performance commando boats. Their steep V-shaped stem allows high speeds which can be maintained even when rapid intervention for instance, must be achieved in rough sea and swell, or in places with simply no access for conventional craft.

Characteristics	380 UM	425 UM	470 UM
Full length	12'4"	13'9"	15'4"
Full width	5'8"	5'8"	6'2"
Compartments	3	3	4
Diameter of the air chamber	1'5"	1'5"	1'6"
Total weight	204 lbs	239 lbs	286 lbs
Maximum engine power	40 H.P.	50 H.P.	60 H.P.
Recommended engine power	20 H.P. to 30 HP.	20 H.P. to 40 HP.	30 H.P. to 50 HP.
Capacity	5/6 men	6/8 men	10 men
Payload	1653 lbs	2095 lbs	2756 lbs

### SPECIFIC CHARACTERISTICS

- External lining of the nose with special fabric on the first third of the boat
- Bottom of the craft lined with three wide rubbing strakes
- Floor-boards fitted with anti-skid material
- Reinforcement of the back part of the transom
- Wide anti-abrasion reinforcements under air chambers
- 2 wood-sheathed metal stringers
- Made with 1670 decitex heavy duty material incorporated with HYPHALON, cold vulcanization
- Colours : army green, grey, black
- conforms with AFNOR J 37825 specifications, controlled by VERITAS

# BOATS

## Rapid deployment craft for military use



### 425 RD - 465 RD - 525 RD

These rapid deployment craft have been designed for missions where rapidity of intervention is essential : assault, diving, reconnaissance, coastguards, police...

3 models already exist : 425 RD - 465 RD - 525 RD.

They are made with famous technology and top quality raw materials which have built the Sillinger worldwide reputation.

These models can be inflated either manually with 2 footbellows included in standard equipment, or with compressed air (optional).

Boats are ready for use in a maximum of 1,5 mn when inflated with high pressure air and 10 mn when inflated manually.

Main specifications :

- Hypalon neoprene fabric, cold glued 1100 Decitex.
- Standard colour : army green.
- For large quantities, grey or black option.

# BOATS

## Rapid deployment craft for military use

Main characteristics	425 RD	465 RD	525 RD
Length	13'4"	15'3"	17'2"
Overall beam	5'8"	6'2"	7'0"
Tube diameter	1'5"	1'6"	1'9"
Air chambers	4 + keel	4 + keel	4 + keel
Passenger capacity	6 men	8 men	12 men
Weight complete with slatted deck	167 lbs	194 lbs	258 lbs
Weight with HP inflation system	231 lbs	265 lbs	348 lbs
Stowed dimensions of basic boat	2'1" x 1'6" x 4'3"	2'2" x 1'7" x 4'4"	2'1" x 2'2" x 4'8"
Stowed dimensions with inflation system	2'3" x 1'7" x 4'3"	2'4" x 1'8" x 4'4"	2'1" x 2'3" x 4'9"
Payload	1980 lbs	2200 lbs	3500 lbs
Maximum engine power	35 HP	40 HP	50 HP
Recommended power	10 to 30 HP	10 to 40 HP	25 to 50 HP

### Standard equipment :

- integrated aluminium slatted floorboard
- 2 lifelines
- carrying handles : 6 on 525 - 4 on others
- 2 rubbing strakes
- 2 paddle retainers
- 2 paddles
- 2 self-bailers
- 2 inflation/deflation footbellows
- 1 bellows stowage pocket
- 1 carrying valise
- 4 pressure relief valves for 465  
(3 on 425 - 4 on 465 - 5 for 525)
- 1 motor protective plate
- 1 repair kit
- fuel tank retention straps
- 1 instruction manual
- load securing points
- towing bridle rings

### Optional equipment :

- removable bowdodger
- operations boat cover
- air inflation system (excl. bottles)
- compressed air bottles
- extra stowage pockets
- flexible fuel tanks
- towing bridle
- rigid sectional floorboard
- heavy duty rubbing strake
- pressure gauge
- davit lifting points
- lifting slings



**The PRO range****380 PRO - 425 PRO - 470 PRO - 500 PRO**

The PRO range has been designed on the same basis as the UM range but as a lighter version. The PRO range is the ideal complement for those specific missions in which weight... and price are important factors.

Similar to the UM range, the PRO range is manufactured with Hypalon/Neoprene fully coated fabric. PRO craft are fast and pure.

On special request, they can be equipped with an inflatable keel instead of the original rigid one. Nevertheless, for excellent stability, even on rough seas or for facing rapid currents, we always recommend a rigid keel which ensures better manoeuvrability and accurate steering.

It can be manufactured to customer's special request, a 3,20 m (3/4 men capacity) model. Similar to all military and commercial craft the PRO range is equipped with anti-skid wooden floorboards that allow equipment to be safely secured and also avoids infrared detection.

# BOATS

## The PRO range

Characteristics	380 PRO	425 PRO	470 PRO	500 PRO
Overall length	13'	14'	15'3"	16'4"
Overall width	5'8"	5'8"	6'1"	6'6"
Air chambers	3	3	4	4
Buoyancy tube Ø	1'44"	1'44"	1'6"	1'7"
Total weight	154 lbs	187 lbs	218 lbs	243 lbs
Capacity	7 men	8 men	9 men	10 men
Maximum load	1848 lbs	2156 lbs	2381 lbs	3087 lbs
Packed dimensions :				
Hull	4'0" x 1'8" x 1'0"	4'4" x 2'2" x 0'8"	4'8" x 2'4" x 1'0"	5'2" x 2'3" x 1'3"
Floorboard	3'3" x 2'3" x 0'6"	3'9" x 2'8" x 0'8"	3'9" x 2'8" x 0'8"	4'1" x 2'3" x 0'9"
Recommended power	20 to 35 HP	20 to 40 HP	20 to 50 HP	40 to 50 HP
Maximum power	40 HP	50 HP	55 HP	70 HP

### Standard equipment :

- 1 high capacity footpump
- 1 repair kit
- 2 carrying bags (1 for 380)
- 1 collapsible wooden rigid keel
- 1 transom protection plate
- 1 set of non-skid wooden floorboards
- 1 fuel tank mount
- 2 lifelines
- 2 towing rings in transom
- 2 lateral anti-rubbing strakes
- 4 carrying handles (2 on 380)
- 2 self-bailers (1 on 380)
- 1 pair of jointed oars or paddles with attachments
- 1 bow carrying handle
- 2 towing rings

### Optional equipment :

- remote steering wheel
- towing bridle
- overall cover
- launching wheels

All PRO boats are manufactured with hypalon/neoprene 1100 Decitex fabric, cold glued.

# BOATS

## Accessories and extras

Every military boat is delivered complete with accessories as specified. Optional accessories are listed separately. Each item has been tested both for intensive military use and suitability to the particular boat. The development of multi-purpose boats has necessitated the manufacture and constant updating of a full range of accessories. It is necessary to distinguish between the two types of equipment available : standard equipment and tactical equipment.

STANDARD EQUIPMENT	TACTICAL EQUIPMENT
<p>All of this equipment is designed to improve the capability and performance of the boat. It should be noted that the following is by no means a definitive list, as we will always be prepared to provide other items to meet specific requirements.</p> <p>⇒ <i>Navigation instruments</i></p> <ul style="list-style-type: none"> <li>- Compass offshore - anti vibration - (with a gimbal frame, or on plate or to integrate in a board).</li> <li>- Single console with navigation instruments</li> <li>- Speedometer</li> <li>- Log, etc...</li> <li>- Marine binocular</li> </ul> <p>⇒ <i>Communication equipment</i></p> <ul style="list-style-type: none"> <li>- Microphone</li> <li>- Walkie-Talkie</li> <li>- Radiophone (Navy frequency and/or Air Force frequency)</li> <li>- Transmitter-receiver for ground to ground or air to ground (VHF / UHF) AM, FM or BLU etc...</li> </ul> <p>⇒ <i>Signalling lights</i></p> <ul style="list-style-type: none"> <li>- Searchlight</li> <li>- Lightbeam transmitter</li> <li>- Navigation lights</li> <li>- Signal searchlight</li> <li>- Distress signal</li> </ul>	<p>Just as specific options have been developed like camouflage covers, Sillinger are constantly researching into and developing devices and options which will ensure that every boat delivered is as complete as possible - whatever the type of use or mission. The boats have on the whole, been developed as naval gun platforms. Obviously in this field, much of our work is highly confidential. Any specific armament requirements you might have will always be approached in the strictest confidence by Sillinger's engineering department. All of these studies require special procedures, and Sillinger have the experience and the know-how to conceive and produce prototype boats for customers past, present and future.</p> <p>⇒ <i>Working equipment</i></p> <ul style="list-style-type: none"> <li>- Mooring anchor</li> <li>- Drag anchor</li> <li>- Buoys and fenders</li> <li>- Boat hook</li> <li>- Boarding ladders (folding ladders)</li> <li>- Anchoring and mooring ropes</li> <li>- Flexible tanks (all capacities)</li> <li>- Tachometer - Ampmeter - Fuel gauge, etc...</li> <li>- Overall cover</li> </ul> <p>⇒ <i>Handling equipment</i></p> <ul style="list-style-type: none"> <li>- Wheels for launching</li> <li>- Spring tie for lifting</li> <li>- Rollers</li> <li>- V for towing</li> <li>- Special marine trailers, etc...</li> </ul> <p>⇒ <i>Security and rescue equipment</i></p> <ul style="list-style-type: none"> <li>- Resuscitation kit</li> <li>- First aid kit</li> <li>- Life jacket (automatic inflation)</li> <li>- Standard life jacket</li> <li>- Lifebelts</li> <li>- Location lights - signal mirror</li> <li>- Fire extinguishers, etc...</li> </ul>

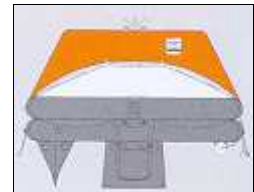
# BOATS

## Liferafts and rescue boats



**Reversible liferafts**  
6 to 50 person capacities

**Yatching liferafts**  
4 to 8 person capacities



For more details about these products, please contact us.

### SOLAS Davit-launched liferafts



12 to 35 person capacity

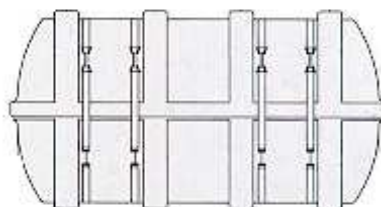
Mod.	Rescue equipment	Container		Liferaft	
		Length (mm)	Width (mm)	Length (mm)	Width (mm)
12 DKF	A & B	1295	715	3328	2882
16 DKF	A & B	1365	790	3342	3342
20 DKF	A & B	1365	790	3686	3686
25 DKF	A & B	1425	780	4076	4076
35 DKF	B	1475	855	4950	4420
35 DKF	A	1570	890		

# BOATS

## Liferafts and rescue boats

For more details about this product, please contact us.

### SOLAS throw-overboard liferafts



Mod.	Container	
	Length (mm)	Width (mm)
4 DK*	910	510
6 DK *	910	510
4 DK**	945	490
4 DK A	1155	561
6 DK	1155	561
8 DK	1155	561
10 DK	1400	620
12 DK	1400	620
16 DK	1400	685
20 DK	1365	708
20 DK A	1365	715
20 DK B	1365	708
50 DK A	2000	1040.5
50 DK B	1765	780
2 x 50 DK	2000	1040.5

\* Squared container

\*\* Special liferafts for fishing boats

# BOATS

## Liferafts and rescue boats

For more details about these products, please contact us.

### MOB rescue boat VIKING 470 GRP 1



*Main specifications :*  
 Length, overall : 4,75 m  
 Beam, overall : 1,90 m  
 Operational weight : 550 kg  
 (25 HP outboard engine and  
 standard equipment included)  
 6 persons : 450 kg  
 Gross weight : 1000 kg  
 SOLAS approved

### MES Dual-track slide with 2 x 50 persons liferaft unit



For installation heights up to 15 m above waterline. Evacuation of 400-450 persons within 30 minutes

