

HOISTING EQUIPMENT



SEDRA MARINE

FRANCE

Tél. : + 33 (0) 5 62 28 32 52 - Fax : + 33 (0) 5 62 28 40 68
e-mail : info@sedra-marine.fr - Site : <http://www.sedramarine-ard.com>



HOISTING EQUIPMENT

Pul-lift ratchet lever hoist model C/D 85



The pul-lift ratchet lever hoist is a versatile, portable tool used for lifting, pulling stretching, fastening or dragging. Its operation is safe and simple. It can be used in all angled positions -even upside down.

The pul-lift comes as model C85 with roller chain and as model D85 with a more flexible link chain.

Designed to take extra punishment in heavy industrial applications : indoor and outdoor.

Almost unlimited applications in maintenance, mining, construction, steel fabrication, ship building and utility work. Ideal for moving and spotting heavy machinery. Practical for pulling electric utility lines taut and stretching cables or fences. Holds steel structural members in place for welding. Simplifies setting pipes, meters etc. in manholes and trenches. Rugged enough for underwater construction work.

		Model D85 with link chain					Model C85 with roller chain				
		750	1500	3000	6000	10000	750	1500	3000	6000	10000
Capacity	kg										
Number of chain strands		1	1	1	2	3	1	1	1	2	3
Chain length at std. 1,5 m lift	m	1,7	1,8	1,8	3,6	5,5	1,7	1,8	1,8	3,5	5,4
Lift at one full lever turn	mm	111	45	33	17	11	115	45	36	18	12
Handle pull at WLL	daN	38,7	31,6	40,7	42,9	37,0	38,5	31,6	40,3	44,0	44,0
Net weight	kg	8,2	16,3	19,6	32,9	60,0	8,7	17,0	22,2	38,0	67,0

HOISTING EQUIPMENT

Ratchet lever hoist model AL with link chain



The ratchet lever hoist model AL is ideally suitable for maintenance and utility applications, in particular in confined areas.

Light weight design features enclosed housing, handlever and handwheel made from high quality aluminium and a chain guide cast into the body.

Handlever operates with little effort due to needle roller mounted gearbox components and optimal gear ratio.

Free chaining device : the load chain can be pulled freely through the hoist in both directions to attach the load or to tension the load chain.

All brake components are made from high quality materials and are zinc plated and chromalized for added corrosion protection.

Drop forged steel suspension and load hooks are heat treated and fracture resistant. In case of dangerous overloading or abuse, the hook does not fracture but will slowly yield. Hooks can rotate 360° and are fitted with safety latches as standard.

Capacity	kg	750	1000	1500	3000
Number of chain strands		1	1	1	1
Chain length at 1,5 m std.	m	1,7	1,7	1,8	1,8
Lift at one full lever turn	mm	30,8	30,8	16,4	14,8
Handle pull at WLL	daN	16,8	22,4	18,7	28,0
Net weight at standard lift	kg	6,4	6,6	10,0	18,0

HOISTING EQUIPMENT

Hand chain hoist model VS



- Robust, all steel-construction
- Extremely low overall height allows optima use of available headroom
- Light in weight
- All rotating components mounted on roller or ball bearings to reduce friction and increase efficiency
- Fully enclosed, self activating load brake with asbestos free friction discs.
- Fully enclosed, stamped steel housing allows also outdoor use.
- Surface protected steel link chain in accordance with national and international standards/regulations.

Ask us for special designs.

Model	VS 0,5/1	VS 1/1	VS 2/1	VS 2/2	VS 3/1	VS 3/2	VS 5/2	VS 8/4	VS 10/4	VS 15/8	VS 20/8
Capacity kg	500	1000	2000	2000	3000	3000	5000	8000	10000	15000	20000
Number of chain strands	1	1	1	2	1	2	2	4	4	8	8
Lin. chain length at 3m. std. lift m	3,2	3,3	3,4	6,3	3,5	6,6	6,6	13,5	13,5	27,8	27,8
Hand chain over-haul to lift 1 m. m	28	42	54	84	83	108	165	329	329	659	659
Lift per 1 m. hand chain over-haul mm	35	23	18	12	12	9	6	3	3	1	1
Pull on hand chain at WLL daN	26	36	54	37	52	41	44	38	46	2 x 35	2 x 46
Net weight at standard lift kg	9,0	11,2	18,0	15,3	28,0	24,7	38,7	69,2	69,2	157,4	157,4

HOISTING EQUIPMENT

Close headroom trolley hoist model VST



Model VSTP with push type trolley
Model VSTG with geared type trolley

This close headroom trolley hoist uses a spur geared chain hoist, which is rigidly connected to a manual trolley by means of a crossbar. This configuration combines compactness and robustness with a very low overall height. The compact design makes it ideal for those applications with low ceilings and limited headroom.

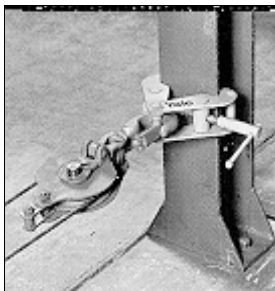
Ask us for special designs.

Model	Capacity kg	Size	Beam flange width b mm	Flange thickness t max. mm	Min. radius curve m	Net weight *		Net weight * with locking device	
						kg		kg	
						VSTP	VSTG	VSTP	VSTG
VSTP/G	500	A	50-180	19	0,90	17,4	19,4	23,9	25,9
	500	B	180-300	19	0,90	18,8	20,8	25,3	27,3
VSTP/G	1000	A	58-180	19	0,90	22,6	28,3	30,6	36,3
	1000	B	180-300	19	0,90	24,8	30,5	32,8	38,5
VSTP/G	2000	A	58-180	19	1,15	33,8	38,0	41,8	46,0
	2000	B	180-300	19	1,15	37,5	41,7	45,5	49,7
VSTP/G	3000	A	74-180	27	1,40	66,0	69,0	75,2	78,2
	3000	B	180-300	27	1,40	68,0	71,0	77,2	80,2
VSTP/G	5000	A	98-180	27	1,80	100,3	106,5	110,8	117,0
	5000	B	180-300	27	1,80	103,0	109,2	113,5	119,7
VSTG	10000	B	125-310	40	1,80	-	175,0	-	-

* At standard lift 3 m. Other lifts available

HOISTING EQUIPMENT

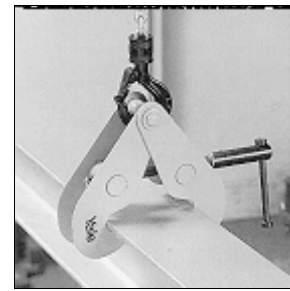
Beam clamp model YC



Rigging anchor point



Hoisting point



Lifting

The beam clamp is designed to provide quick and versatile rigging or hoisting points for a great variety of applications.

The threaded adjustment mechanism easily attaches to the beam flange to provide a safe and secure grip. In addition the threaded bar can be secured by means of a screw and a copper flat.

The beam clamp can either be permanently mounted or easily removed for use in different locations.

Model	Capacity kg	Flange width mm	Net weight kg
YC 1	1000	75-230	3,8
YC 2	2000	75-230	4,6
YC 3	3000	80-320	9,2
YC 5	5000	90-310	11,0
YC 10	10000	90-320	17,2

HOISTING EQUIPMENT

Beam clamp with integral trolley model CTP



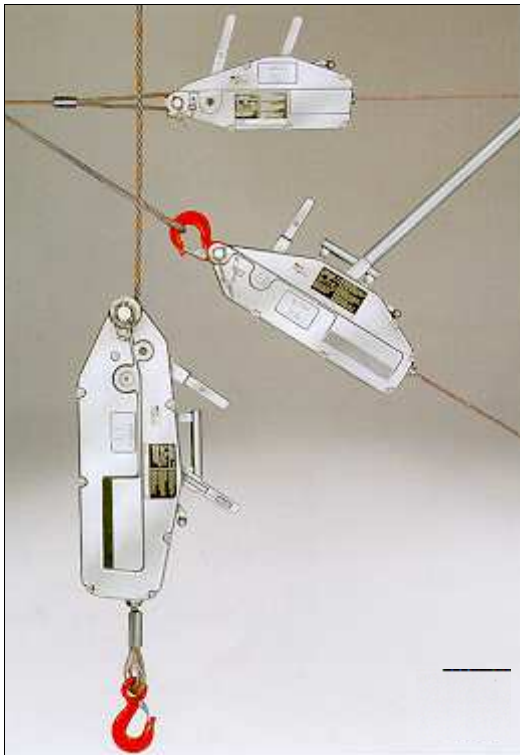
The beam clamp with integral trolley model CTP is designed to provide a quick and easy attachment to overhead beams for the attachment and transport of loads. The clamp is adjustable to the beam width in the same manner as the proven beam clamp by rotating the threaded spindle. For additional safety the adjustment is secured by tightening the locking lever against the sideplate.*

- Adjustable to suit a wide range of beam widths and profiles. The trolley wheels are designed for a max. beam profile incline of 14%.
- Excellent rolling features due to machined steel wheels mounted on prelubricated, encapsulated ball bearings.
- Anti-tilt and anti-drop devices as standard.
- Threaded spindle zinc plated for added corrosion protection.
- The beam clamp with integral trolley is in accordance with UVV (German Accident Prevention Act) for vertical load attachment.

Model	Capacity kg	Flange width mm	Weight kg
CTP2-A	2000	75-200	9,9
CTP2-B	2000	200-300	10,3
CTP3-A	3000	75-200	17,5
CTP3-B	3000	200-320	19,5

HOISTING EQUIPMENT

Cable puller



The cable puller is a versatile and portable unit for pulling, lifting, lowering, spanning and securing loads over long distances. It comes in three sizes with capacities of 800, 1600 and 3200 kg. It is light, easy and safe to operate.

Overload protection provides high labour safety : the forward lever has a built-in shearing pin, which will shear at approx. 25 % overload. The broken pin, however, can be replaced without removing the load.

The cable puller requires minimum maintenance and is easy to service. The large opening in the top of housing allows easy and quick cleaning of the unit with water, even hard caked mud can usually be flushed out. Then simply apply motor oil for lubrication and the cable puller is ready again for use.

The cable puller uses a special wire rope with steel core and is identified by an orange stripe. Only this special wire rope will ensure proper functioning.

The standard cable puller includes the operating lever and a 20 m or 10 m length of wire rope mounted on a reel. The wire rope is fitted with a safety hook at one end, and is tapered at the other end for easy access into the unit. Longer rope lengths and a large variety of accessories are available on request.



800 kg capacity



1600 kg capacity



3200 kg capacity

Model		Y 08	Y 16	Y 32
Lifting capacity (WLL)	kg	800	1600	3200
Rope advance per full stroke cycle	mm	60	60	40
Lever pull at WLL	daN	24	30	50
Lever length	mm	800	790/1190	790/1190
Wire rope Ø	mm	8,4	11,5	16,0
Net weight without cable	kg	7,0	14,0	21,0
Rope weight	kg/m	0,29	0,53	1,0
Pulling capacity *	daN	1250	2500	5000

* observe local regulations

HOISTING EQUIPMENT

Cable lever hoist model LMS 1000



Capacity : 500 kg

Thanks to its making and its robustness, the cable hoist model LMS 1000 is the solution for all kind of outside and inside hard works. Used with single fall or double fall for lifting, lowering, pulling and tightening - there is no limit to its versatility.

This cable hoist is an indispensable tool for shops and workshops. Its lightweight, its strength and its handiness makes the cable hoist a very usefull tool whatever your activity (industrial, agricultural or forestry).

The cable hoist model LMS1000 has a brake in accordance with the most severe security instructions.

Model	Single fall			Double fall			Net weight kg	Lever length mm	Hook opening mm	Rope Ø mm
	Capacity kg	Lift m	Bulk mm	Capacity kg	Lift m	Bulk mm				
LMS 1000	450	2,8	470	900	1,4	570	4,5	420	21	5

HOISTING EQUIPMENT

Cable hoist model LM

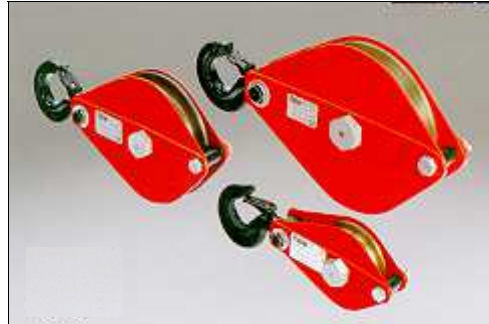


- Pulling force 250/500 - 900/1800 kg
- High strength aluminum alloy castings reduce weight and resist corrosion
- A double interlocking pawl system holds secure regardless of the direction of the pull
- All load bearing shafts are mounted on oilite bushings to reduce wear
- All springs and shafts are stainless steel to resist corrosion
- Special preformed 7 x 19 cable.
- Forged fracture resistant top and bottom hooks with safety latches
- **The LM cable hoist may only be used for pulling and tensioning. Lifting and lowering of loads is not permissible**

Model	Single fall			Double fall			Net weight kg	Lever length mm	Hook opening mm	Rope Ø mm
	Capacity kg	Lift m	Head-room mm	Capacity kg	Lift m	Head-room mm				
100-V	350	9,0	450	700	4,5	535	3,0	415	17	4,0
115 D-V	500	4,6	550	1000	2,3	700	4,5	420	22	4,8
202 WN-V	500	6,0	525	1000	3,0	690	5,2	520	22	4,8
434 WN-V	500	9,0	550	1000	4,5	710	5,8	530	22	4,8
S 434 WN-V	700	6,0	565	1400	3,0	725	6,0	530	22	5,6
S 404 WN-V	900	5,2	575	1800	2,6	720	5,9	635	22	6,4
100-X	250	9,0	450	500	4,5	535	3,0	415	17	4,0
202 WN-X	375	6,0	525	750	3,0	690	5,2	520	22	4,8
434 WN-X	375	9,0	550	750	4,5	710	5,8	530	22	4,8
S 434 WN-X	500	6,0	565	1000	3,0	725	6,0	530	22	5,6
S 404 WN-X	625	5,2	575	1250	2,6	720	5,9	635	22	6,4
404 HD	800	3,6	620	1600	1,8	740	6,4	635	22	7,9

HOISTING EQUIPMENT

Pulley blocks



The pulley blocks can be opened for easy and quick assembly of the rope. By swinging the hook in the direction of pull, the pulley block locks securely.

The high quality cast steel sheave has machined grooves and is fitted with red bronze bushes. The steel sheave axle has lubrication bores and a central grease chamber.

Capacity kg	Rope Ø mm	Weight kg
1000	7	3,3
2000	13	8,9
3200	15	15,5
6400	18	26,5

HOISTING EQUIPMENT

Electric chain hoist model GH



Trolley technical information

Model	Capacity kg	Beam flange		Min. curve radius m	Electric trolley	
		Trolley range	Track widths mm		Travel speeds m/min	Motor kW
GH 1-8 GHF 1-8	1000	A	58-180	0,90	18	0,18
GH 2-8 GHF 2-8						
GH 5-4 GHF 5-4 GH 5-8 GHF 5-8		B	180-300		18/4,5	0,18/0,06
GH 10-4 GHF 10-4						
GH 10-8 GHF 10-8	2000	A	58-180	1,15	18 or	0,18 or
GH 20-4 GHF 20-4		B	180-300		18/4,5	0,18/0,06

Hoist technical information

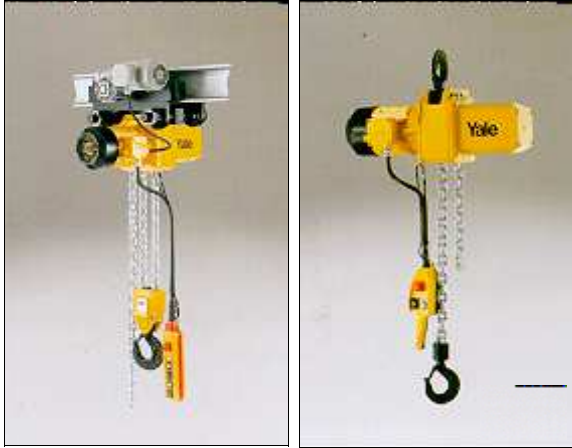
Model	Capacity kg	Chain falls	FEM	Main speed m/min	Aux. speed m/min	Motor kW	Motor rating ED %	Net weight		
								Hook suspension kg	With push trolley kg	With elec. trolley kg
GH 1-8 GHF 1-8	125 125	1 1	1 Am	8 8	- 2	0,4 0,4/0,1	30 25/12½	18 19	29 30	38 39
GH 2-8 GHF 2-8	250 250	1 1		8 8	- 2	0,4 0,4/0,1	30 25/12½	18 19	29 30	38 39
GH 5-4 GHF 5-4 GH 5-8 GHF 5-8	500 500 500 500	2 2 1 1		4 4 8 8	- 1 - 2	0,4 0,4/0,1 0,8 0,8/0,2	30 25/12½ 30 25/12½	20 21 36 38	31 32 47 49	40 41 56 58
GH 10-4 GHF 10-4 GH 10-8 GHF 10-8	1000 1000 1000 1000	2 2 1 1		4 4 8 8	- 1 - 2	0,8 0,8/0,2 1,6 1,6/0,4	30 25/12½ 30 25/12½	39 41 48 54	50 52 66 72	59 61 75 81
GH 20-4 GHF 20-4	2000 2000	2 2		4 4	- 1	1,6 1,6/0,4	30 25/12½	55 61	73 79	82 88

The electric chain hoist model GH offers the quality and efficiency that you demand and expect.

- Tested and approved by German and other international safety and inspection authorities.
- Additional safety through 48V control voltage and encapsulated pendant control IP65 with emergency stop button as standard.
- Adjustable internal clip clutch prevents overloading and damage when accidentally hoisting against the upper or lower hook position.
- An encapsulated gearbox limit switch for the operational limiting of hook travel is optional.
- Surface protected, high tensile load chain conforms to all valid national and international regulations.
- Oil bath lubricated gear box with hardened precision gears and encapsulated, high grade bearings for low maintenance operation.

HOISTING EQUIPMENT

Electric chain hoist model CPE



Trolley technical information

Model	Trolley range	Beam flange width b mm	Min. radius of curve m	Electric trolley	
				Travel speeds m/min	Motor kW
CPE 16-8 CPEF 16-8	A	98-180	1,80	18	0,32
CPE 20-8 CPEF 20-8				or	or
CPE 25-5 CPEF 25-5				18/4,5	0,4/0,1
CPE 30-5 CPEF 30-5	B	180-300	1,80	18	0,32
CPE 32-4 CPEF 32-4				or	or
CPE 40-4 CPEF 40-4				18/4,5	0,4/0,1
CPE 50-2 CPEF 50-2					

The electric chain hoist model CPE is compact in design and highly efficient. Its compact dimensions allow the use of a top hook or rigid attachment to the VT trolley range by means of steel shafts.

Heavy duty squirrel cage motor with low maintenance, adjustable electromechanical spring pressure brake guarantees reliable braking even in case of a power failure. High duty rating.

The chains are zinc plated for added corrosion protection. The precision machine 5-pocket load sheave is made from case hardened, high tensile steel. The replaceable chain guide is robust, precision machined and wear resistant.

Oil bath lubricated planetary gearbox with hardened gears and high grade bearings. Robust internal slip clutch prevents overloading and damage when accidentally hoisting against the upper and lower hook position. The clutch is easy to access for servicing and is factory adjusted for reliable operation. Drop forged suspension and load hooks. Heat treated and fracture resistant. Fitted with forged steel safety latches as standard. Load hook bearing mounted 360° rotation.

Hoist technical information

Model	Capacity kg	Chain falls	FEM	Main speed m/min	Aux. speed m/min	Motor kW	Motor rating ED %	Net weight		
								Hook suspension kg	With push trolley kg	With elec. trolley kg
CPE 16-8 CPEF 16-8	1600 1600	1 1	1Am 1Am	8 8	- 2	2,3 2,3/0,58	40 40/20	87,8 92,8	150,4 155,4	164,0 169,0
CPE 20-8 CPEF 20-8	2000 2000	1 1	1Bm 1Bm	8 8	- 2	2,8 2,8/0,7	25 25/15	87,8 92,8	150,4 155,4	164,0 169,0
CPE 25-5 CPEF 25-5	2500 2500	1 1	1Am 1Am	5 5	- 1,25	2,3 2,3/0,58	40 40/20	87,8 92,8	150,4 155,4	164,0 169,0
CPE 30-5 CPEF 30-5	3000 3000	1 1	1Bm 1Bm	5 5	- 1,25	2,8 2,8/0,7	25 25/15	87,8 92,8	150,4 155,4	164,0 169,0
CPE 32-4 CPEF 32-4	3200 3200	2 2	1Am 1Am	4 4	- 1	2,3 2,3/0,58	40 40/20	106,9 111,9	168,7 173,7	182,3 187,3
CPE 40-4 CPEF 40-4	4000 4000	2 2	1Bm 1Bm	4 4	- 1	2,8 2,8/0,7	25 25/15	106,9 111,9	168,7 173,7	182,3 187,3
CPE 50-2 CPEF 50-2	5000 5000	2 2	1Am 1Am	2,5 2,5	- 0,6	2,3 2,3/0,58	40 40/20	106,9 111,9	168,7 173,7	182,3 187,3

* Weight at 3 m standard lift.

HOISTING EQUIPEMENT

Hand pallet trucks model LMP



The hand pallet truck model LMP is ideal for applications where the cost/performance relationship is the deciding factor.

- Control handle with enclosed switch lever for highest possible accident protection.
- Switch lever with 3 positions : up, neutral, down.
- Control handle returns automatically to the vertical position when released (spring loaded).
- Polyurethane tyred steer and load wheels are roller bearing mounted as standard (wear resistant, quiet in operation with low rolling resistance).
- Reliable hydraulic unit with hard chromium plated piston.
- Pressure relief valve provides overload protection.
- Robust construction with welded steel frame and reinforced forks.
- Sealed for life bearings and proven construction guarantee a long, sage and maintenance-free life.
- Forks tips with pallet entry rollers.

Model		LMP 20S	LMP 20T	LMP 25T
Lifting capacity	kg	2000	2000	2500
Steer wheels (PUR*)	mm	Ø 200 x 50	Ø 200 x 50	Ø 200 x 50
Load wheels (PUR*)	mm	Ø 80 x 74 (single)	Ø 80 x 60 (tandem)	Ø 80 x 60 (tandem)
Weight	kg	80	82	84

* Steer and load wheel material : PUR = Polyurethane

HOISTING EQUIPMENT

Lifting equipment - hand winches



Rope winch

For light work.
Safety handle with load reaction brake and folding crank hold load in desired position.

Type	Order No.	Load	Crank force	Rope dimensions	Weight
421.0,075	203 717	0.075 t	140 N	20 m / Ø 3 mm	2,5 kg
421.0,125	203 718	0.125 t	170 N	15 m / Ø 4 mm	4,0 kg



Rope winch

With self-locking worm gear, splash proof gear box. Maintenance free bearings, folding crank.

Type	Order No.	Load	Crank force	Rope dimensions	Weight
4751.0,4	200 045	0.4 t	180 N	7 m / Ø 5 mm	6 kg
4185.0,5	200 046	0.5 t	138 N	30 m / Ø 5 mm	12 kg



Rope winch with spur gear

Flat, space saving design. "Safety" (recoilless) crank with folding handle.

Type	Order No.	Load	Crank force	Rope dimensions	Weight
220.0,3	200 047	0.30 t	190 N	20 m / Ø 4 mm	10 kg
220.0,5	200 048	0.50 t	210 N	20 m / Ø 5 mm	10 kg
220.0,75	200 049	0.75 t	200 N	27 m / Ø 6 mm	14 kg
220.1	200 815	1.00 t	180 N	16 m / Ø 8 mm	14 kg



Rope winch

With transmission gear box for heavy loads. Recoilless safety crank with folding handle.

Type	Order No.	Load	Crank force	Rope dimensions	Weight
220.2	200 051	2 t	320 N	15 m / Ø 10 mm	23 kg
220.3	200 052	3 t	300 N	9 m / Ø 12 mm	32 kg



Rope winch

Noiseless operation, with internal self-actuating brake, slack rope inhibitor. Removable handle fits either side. Easily installed on flat surfaces. Suitable for indoor sport halls, stage and studios.

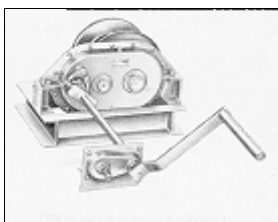
Type	Order No.	Load	Crank force	Rope dimensions	Weight
4216.0,25	200 053	0.25 t	120 N	29 m / Ø 4 mm	12 kg
4216.0,5	200 054	0.50 t	140 N	20 m / Ø 5 mm	12 kg
4216.0,75	200 055	0.75 t	200 N	35 m / Ø 6 mm	15 kg
4216.1	200 056	1.00 t	220 N	18 m / Ø 8 mm	15 kg



Rope winch

With integral load reaction brake, declutchable rope drum. High and low speed gears, splash proof casing. For boat trailers and break-down vehicles.

Type	Order No.	Load	Crank force	Rope dimensions	Weight
4202.0,5	200 057	0.5 t	170 N	28 m / Ø 5 mm	11 kg



Rope winch

Heavy duty version on "C" channel frame. Oil filled sturdy casing. High and low speed gear and free spooling clutch. For pulling and securing heavy loads. E.g. for cable reel carriers, low loaders and car transporters.

Type	Order No.	Load	Crank force	Rope dimensions	Weight
4060.1,5	200 058	1.5 t	185 N	30 m / Ø 12 mm	71 kg

If you need some more details concerning this equipment, contact us



TIRFOR T-500 : multifunction, simple, efficient, sturdy

		T-508	T-516	T-532
Lifting capacity	daN/kg	800	1600	3200
Weight	kg	6,6	13,5	24
Cable diameter	mm	8,3	11,5	16,3
Standard lengths*	m	20	20	20

*Other lengths on request



TIRFOR TU : to lift and to pull heavy charges

		TU-8	TU-16	TU-32
Lifting capacity	daN/kg	800	1600	3200
Weight	kg	8,4	18,5	27
Cable diameter	mm	8,3	11,5	16,3
Standard lengths*	m	20	20	20

*Other lengths on request



TIRFOR TU-H

This equipment is made of a hydraulic unit which allows you to operate remote, together or separately, 1-2 or 4 machines Tirfor TU-16H/1600 kg or TU-32H/3200 kg, having auto-reverse hydraulic cylinders. The TU-32 is available with a pneumatic motor. The hydraulic unit has an electric or heat engine.

- No fatigue for the operator
- Labor saving, only one person to operate several machines at the same time
- Time saving thanks to a continuous work
- More important security thanks to the remote control



JOCKEY : sturdy, easy-to-use and extra-light

		JOCKEY	SUPER JOCKEY J5
Lifting capacity	daN/kg	300	500
Weight	kg	1,750	3,750
Cable diameter	mm	4,5	6,5
Standard lengths*	m	10	10

*Other lengths on request



TIRVIT : tensioner for cables or ropes
TIROPE : to tighten , to pull and to take out a rope

		F2	F3/F3D*	F4	TIROPE
Lifting capacity	daN/kg	400	600	800	500
Weight	kg	4	5,2	6,2	4,2
Cable diameter	mm	2-8	7-15	14-18	12,5

* The F3D model with integrated dynamometer allows you to control the tension of the cables and to measure constantly the tractive effort.

If you need some more details concerning this equipment, contact us



BRAVO : hand chain lever hoist : compact, sturdy and easy-to-use

		500	750	1500	3000	6000
Lifting capacity	daN/kg	500	750	1500	3000	6000
Number of strands		1	1	1	1	2
Standard lifting height	m	1,5	1,5	1,5	1,5	1,5
Weight with 1,5 meter chain	kg	5	7	11	20	30



TRALIFT : hand chain hoist : easy-to-use, light, efficient and compact

		500	1000	1500	2000	3000	5000	10000	20000
Lifting capacity	daN/kg	500	1000	1500	2000	3000	5000	10000	20000
Number of strands		1	1	1	2	2	2	4	6
Standard lifting height	m	3	3	3	3	3	3	3	3
Weight with 3-meter chain	kg	9	13	19	19	27,5	43	78	172

Are available with feed movement by manoeuvre chain or by thrust



TRALIFT TE : electric chain hoist : light and sturdy

		TE 125	TE 250	TE 500	TE 1000	TE 2000
Lifting capacity	daN/kg	125	250	500	1000	2000
Number of strands		1	1	1 / 2	1 / 2	2
Standard lifting height	m	3	3	3	3	3
Weight with 1,5 meter chain	kg	18	24	30 / 31	60 / 36	66

Are available with feed movement by manoeuvre chain, by thrust or motorization



CORSO

The CORSO trolley range is easy to adjust and is adapted to the suspension of your lifting equipment.

- Feed movement by manoeuvre chain (1 to 20 tonnes),
- Feed movement by thrust (0,5 to 10 tonnes),
- Free fall system for a security operation,
- Oval suspension link, for a quick coupling of the hoist.



CORSO

The CORSO adjustable clamp range allows a reliable and quick coupling point and is adjustable to a wide range of flange widths and beams (IPN, IPE...).

- 5 models (1 to 10 tonnes),
- Compact and sturdy construction,
- Easy, simple and quick to use,
- Quick coupling to the beam flange.

If you need some more details concerning this equipment, contact us



MINIFOR : electric portable winch easy to use, sturdy, powerfull

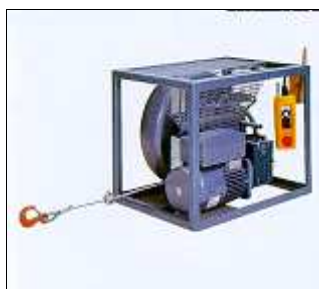
		TR 10	TR 30	TR 30 S	TR 50
Lifting capacity	daN/kg	100	300	300	500
Lifting speed	m/mn	15	5	13	7
Weight	kg	20	20,2	31,6	31,6
Cable diameter	m	5	5	6,5	6,5

Ask us for the options available



BELTRAC : electric strap hoist, illimited lifting, constant speed

		BELTRAC 300	BELTRAC 600
Lifting capacity	daN/kg	300	600
Lifting speed	m/mn	12	6
Weight	kg	42 (mono) - 37,5 (tri)	
Rope dimension	mm	30 x 3	
Rope breaking load	kg	3500	



TIRAK

It is used as a winch for all types of works. Capacity : up to 2000 kg. Weight : 25 to 85 kg depending on the models. Standard speed : 9 or 18 m/mn, bispeed : 4,5/9 ; 9/18 ; 4,5/18 m/mn. Pneumatic, hydraulic or electric motors. TIRAK can be delivered on compact chasis with cable reel up to 500 meter length. Two-way pulling.

- Endless work length
- Safe and reliable
- Compact conception and shape



CAROL : hand drum winch : light and sturdy

		CAROL TR	CAROL TS
Lifting capacity	daN/kg	150 / 2000	250 / 3000
Cable maxi. length	m	22 / 30	20 / 40
Speed (mono and tri)	m/mn	manual	manual
Weight	kg	8 / 60	10 / 145

Ask us for the options available



CAROL : drum motorised winches

		CAROL TC/TE	CAROL TC/TE
Lifting capacity	daN/kg	200 / 300	500 / 800
Cable maxi. length	m	60	60 / 80
Speed (mono and tri)	m/mn	20 / 25	5 / 23
Weight	kg	49	85 / 90

Ask us for the options available, TE : standard, TC : with chassis

HOISTING EQUIPMENT

If you need some more details concerning this equipment, contact us



PIONEER

The PIONEER manual pallet trucks has a 2000 kg capacity.

- 3 position control (lifting, descent, positioning)
- Wheels and rollers made in polyurethane for easy displacements.
- Life-lubricated bearings and a high output pump unit.



LOCKAY

LOCKAY is the multifunction hoisting accessory and is made of a pivoting lock allowing the web going through and being blocked in order to make by yourself a sling whose length is adapted to your needs.

- Easy to use, no tools are necessary
- Available, immediate making of the sling by the user
- Adjustable, length setting with configuration choices with the same machine
- Economical, can be used again once the used strap changed
- Security, the detector prevents the user from making an incorrect strap



DYNAFOR LLX : to control loads and to measure tractive efforts

250 hours autonomy, 0,2% accuracy, digital display, microprocessor

		LLX-0.25	0.5	1.25	2.5	5	12.5	25	50	100	250
Capacity	t	0,25	0,50	1,25	2,5	5	12,5	25	50	100	250
Accuracy	+/- kg	0,5	1	2,5	5	10	25	50	100	200	500
Weight	kg	1,1	1,1	1,1	1,4	1,9	3,8	6,6	15,1	46,0	215

All these models are available with radio transmission up to 60-80 meters



DYNAFOR MWX : to measure and to control loads on travelling cranes

700 hour autonomy and its overdimensionned shackle and hook.

		MWX-0.25	0.5	1.25	2.5*	5*	12.5*
Capacity	t	0,25	0,50	1,25	2,5	5	12,5
Accuracy	+/- kg	0,5	1	2,5	5	20	25
Figure height	mm	25	25	25	44	44	44
Weight	kg	4,7	4,7	4,7	7	8,5	21

*available in version : infrared remote control, remote reading, compression



DYNASAFE HF 32

Universal effort captors detect the effort limits on the cable hoisting equipment having a fixed strand. Especially made for the travelling cranes, this charge limit has cutting power of 4A/220 Vca, 5% repeatability and 55 protection index.

		HF 32/1/A	HF 32/2/A	HF 32/3/A
Maxi strand capacity	daN	250 to 3000	300 to 6000	1000 to 12000
Cable diameter	mm	5 to 16	17 to 26	27 to 36

It exists a B version of the HF 32 models whose cutting power is 25mA.